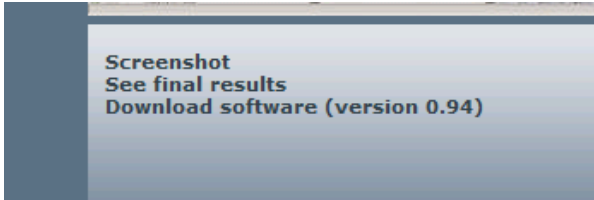


## Installing Ski Pro

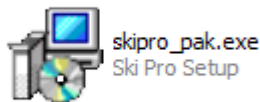
The software is downloaded from the Tag Heuer web site at:-

<http://www.tagheuer-timing.com/products/software/ski-pro/index.lbl?lang=en>



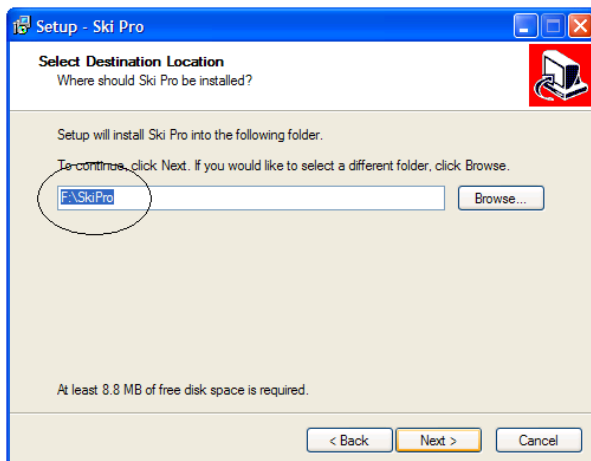
Click on the “Download software (version 0.94) and close a location to save it.

Once saved it must be installed. Navigate to the directory (folder) and find this file:-



Double click on this file, once it starts installing click “Next”, then select “I accept the agreement” then click “Next”.

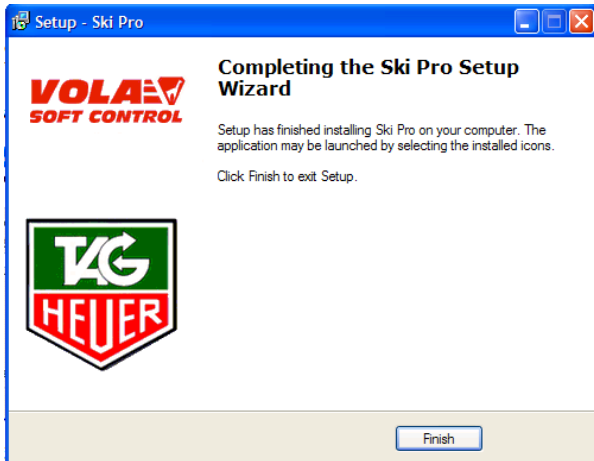
Then this window appears:-



I suggest that in the circled area you have the option as “C:\SkiPro”, I find with almost any software if do not install in the default location if gives problems.

Next, tick the box to make a desktop icon (makes it easy to find). Then click “Next and finally click “Install”

Then wait while the green bar moves across the screen, until this appears:-

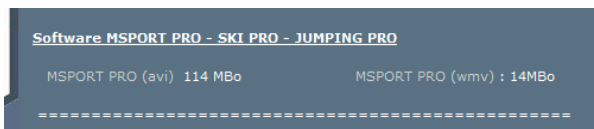


***Click on “Finish” and the easy bit is done!***

Revisit the web site once again here:-

<http://www.tagheuer-timing.com/products/software/helpsw/index.lbl?lang=en>

This part of the screen,



Gives a nice little video showing the software in use, worth a look.