


Timing a Race.

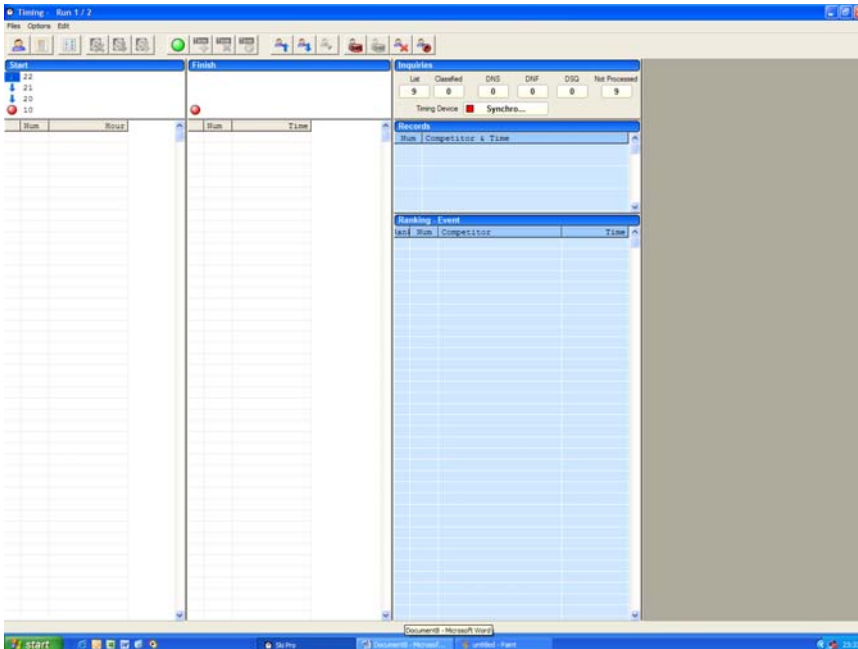
To time a race using this software you need:-

- a) A working timer that is communicating with the software.
- b) Registered racers who have all be assigned bibs.
- c) Start lists made up of those racers, at least a start list for first run.

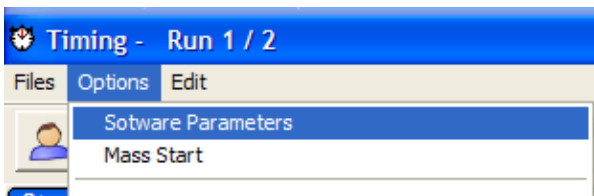
Ensure you are on run 1 using the arrows shown below:-



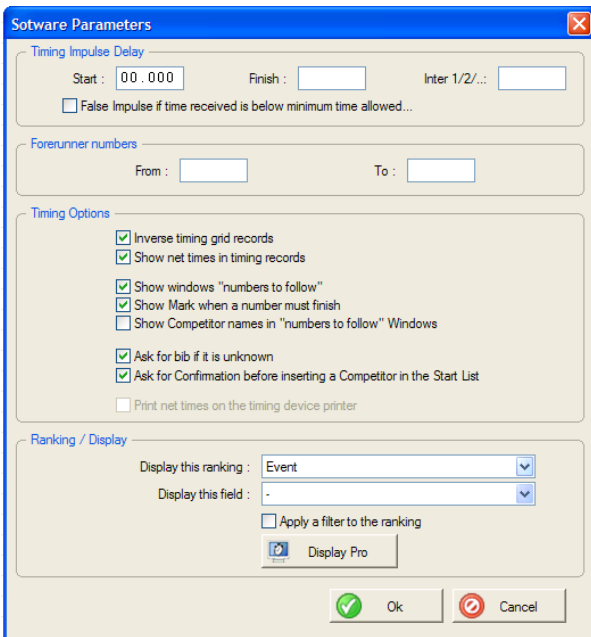
Then click the  Timing button, this will appear:-



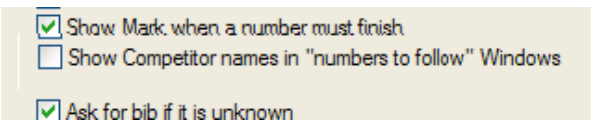
Make the Start & Finish areas larger and then select the following:-



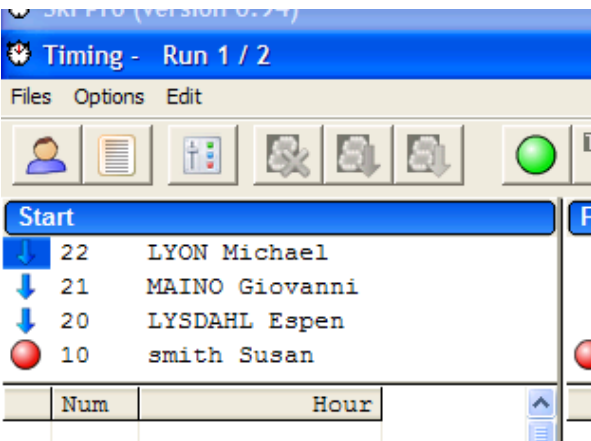
This will appear:-



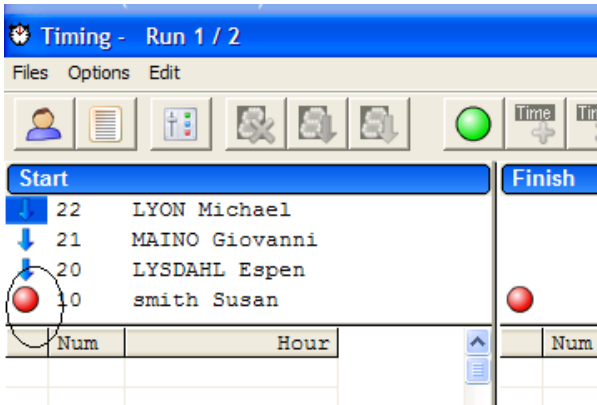
Ensure the “Show Competitor names in “numbers to follow” windows:-



Is selected, this displays the names as shown:-

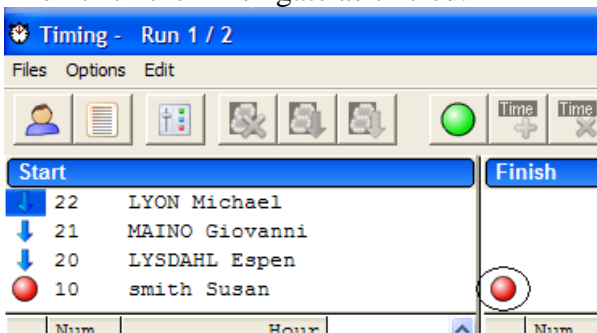


Now you are ready to go, make the start and finish gates active as follows:-



Click the red button (circled) and then the Green button on the top row, they should both be green.

Then click the finish gate as circled:-



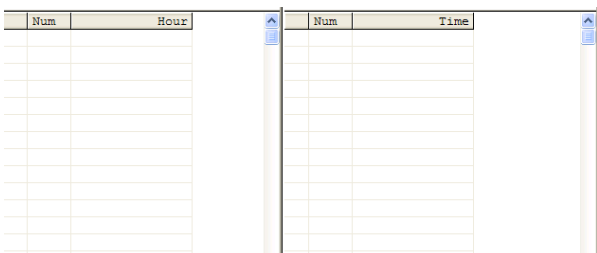
Then the green button on the top row again. All buttons should be green.

Now start running the racers in their bib start list order.

Once again at Nevis Range we have an Alge TDC4000, I have not yet used this software with ski pro, but it its like Ski, the following may be helpful.

Once the race has started you “drive” the race from the timing device itself. Remember Ski and SkiPro are simply for gathering and collating the results.

Thus on the Alge TDC4000, the first runner starts. The Alge tells SkiPro the start time. The racer then enters the start time and finish time listings in Ski Pro:-



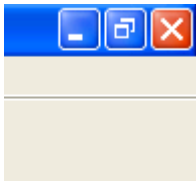
On The Alge you must select the bib number of the next racer to cross finish line, thus if 10 starts, you must watch the course, or run them with long enough intervals to get the right racer. Then as the racer (10) approaches the finish line you enter this on the key pad on the Alge. Once the racer crosses the finish line the Alge tells SkiPro the finish time. SkiPro calculates the interval.

If any racers do not start are disqualified or has a penalty, you select them using the mouse and press the relevant button:-



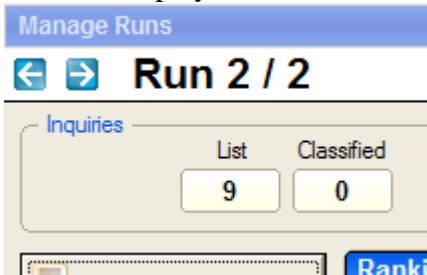
The man with the cross is for no time.

Once your first run is complete, you press the red cross:-



To exit timing, alternatively select “Files” then “Exit Timing” a dialog box will appear asking you if you are sure.

Now you must move to your second run, if you have one, by pressing the right arrow until the display is as shown below :-



Select using blue right arrow.

Then do it all over again. Alternatively you may have to produce a second run starting list if you have not yet done so, perhaps because you want your second run to be in reverse fastest first run time for dramatic effect.

You do not have to save anything because once a run is made it is automatically saved by the software.