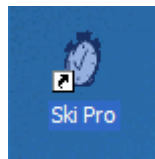
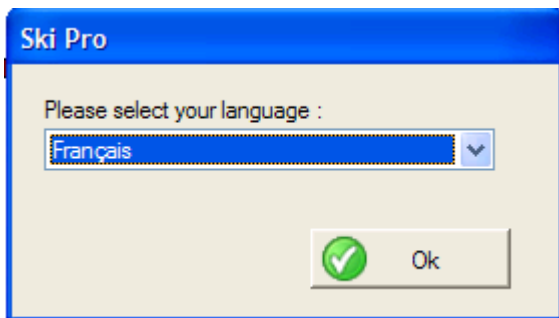


## Starting Ski Pro For The First Time.



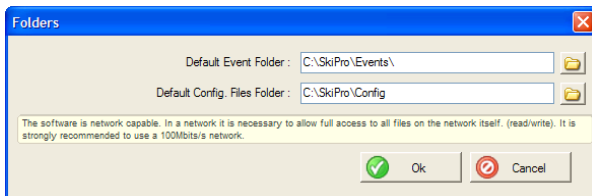
On your desk top find this icon and double click it. (so long as you selected “make desktop option” in last section)

On starting for the first time a small dialog box will pop up asking you what language,



Select English and click OK.

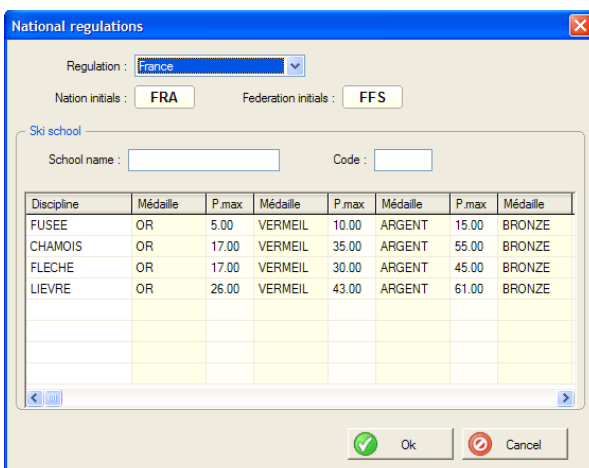
Then a box will appear asking you where to put your event and configuration files. Once again use the defaults:-



These are “C:\SkiPro\Events “ and “C:\SkiPro\Config”.

Once you are happy with the box click “OK”

Next this screen appears:-



I left this at the default “France” and then clicked OK.

Finally the main screen appears :-

