

Testing The Connection To The Timing Device.

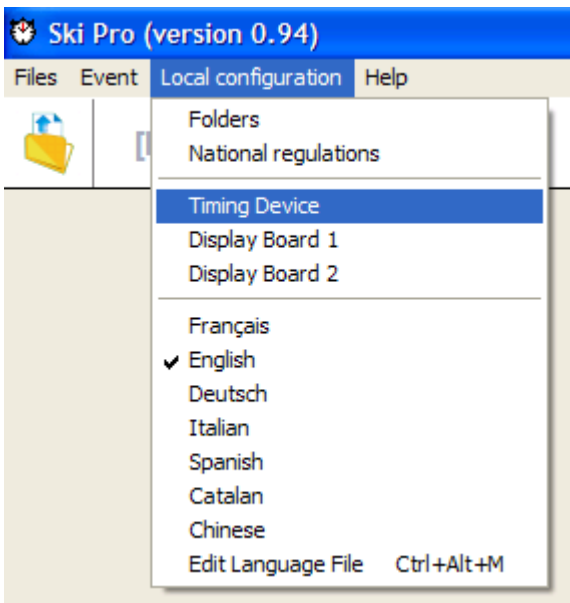
This operation can be done after you have loaded all the racers and set up various races, it does not have to be done first.

We at Nevis Range have an Alge TDC 4000, this will only work if a small USB dongle is obtained from Tag Heuer, not cheap!

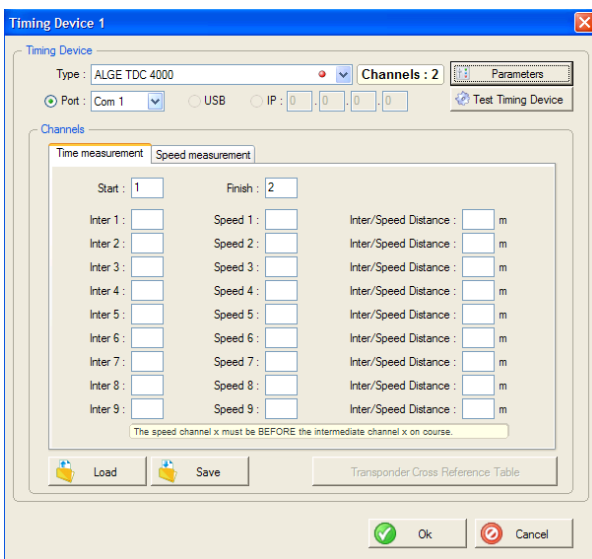
However, let's assume you have one!

Plug the timing device into the Com port on your PC. This will be down to you and your PC. The Alge plugs into the nine pin d type. Switch it on.


Next on the software make this selection:-



This will bring up this screen:-



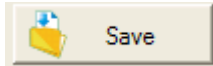
As you can see I have already set Type to ALGE TDC 4000 and the Port to Com 1.

Once you are happy click on  and another window called test timing device will appear. Operate your start and stop gates and you should see start and finish times appearing in the test device window.

A work of warning, on the ALGE, it has two timing modes, one only puts out a time when something happens, i.e. a gate is crossed. The other mode is where it puts out the last time continuously. Only updating when a gate is crossed. Only use the mode that puts out the time once. On The ALGE this is selected by the rotation of the round DIN plug that connects the PC to the ALGE.

You may have to poke around with this a bit to get it working. Don't leave this till race day!!!

Once you are seeing times etc you can click "OK" on each window to return you to the main screen.

It is possible to save your configuration in the above screen using the  button, this would be of use if you used the same timing gate on every occasion or your event ran over several days.