

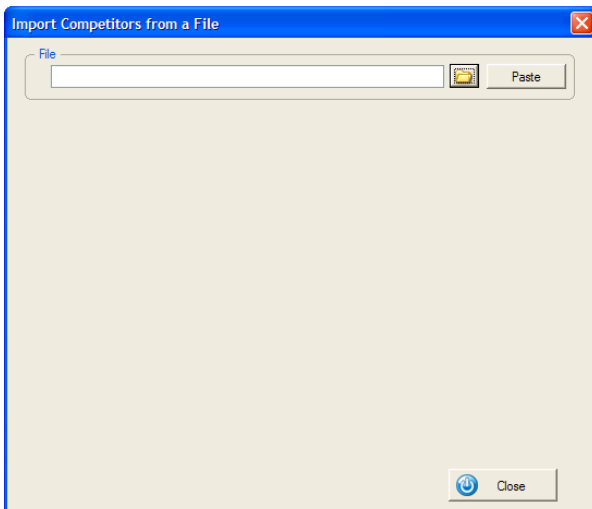
Importing Racers From Lists Club Racers and BASS.

One of the major improvements in Ski Pro is the ability to import racers from other sources such as Excel spreadsheet.

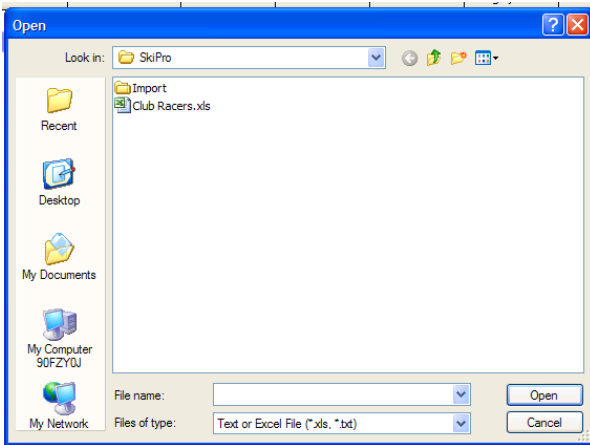
In the Manager competitor's screen, select "Options" then this appears:-



Make a selection "Import Competitors from a File" as shown, this appears:-

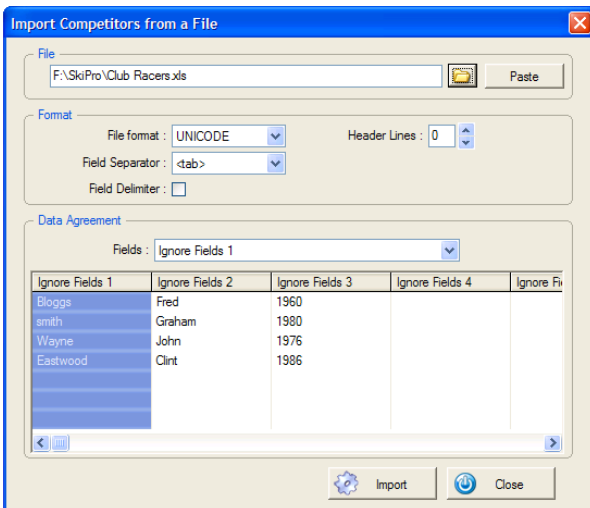


Click on the little folder button, and normal windows file dialog box appears:-

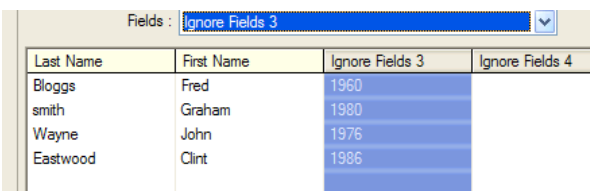


Interestingly I already have a file called “Club Racers.xls”, select the wanted file and click OK.

This appears:-



This is where you select the fields you want from the spread sheet.



By selecting the column, Then using the Fields drop down box you can name each column to bring it into Ski Pro, if you leave it alone i.e. Ignore Fields 4, it will, obviously I am about to set Ignore Fields 3 to Year.

Once you are happy click  then  and this happens:-

7	Bib. ✓	Last Name	First Name	Code	Gender	Year	Category
		Asker	Martyn		Men	1960	Mast-A
New (F1)		Asker	Sian		Ladies	1982	Sen
		Bloggs	Fred		Men	1960	Mast-A
Modify (F2)		Eastwood	Clint		Men	1986	Sen
		Wayne	John		Men	1976	Mast-A
Delete		smith	Graham		Men	1980	Sen
		smith	Susan		Ladies	1987	Jun
Options							

The minimum you spread sheet needs is :-

Surname
 First name
 Gender, Men or Ladies.
 Year

It can cope with same names but warns you this person is already registered.

BASS Racers,

Obviously this system can cope with BASS racers. Go to the web site here :-

<http://www.britski.org/>

Get this file:-

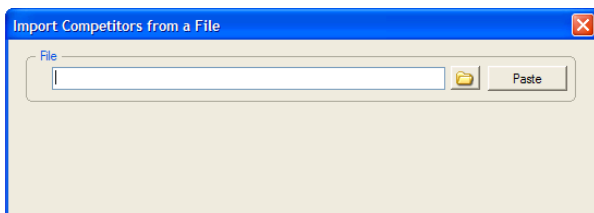
SEED LISTS

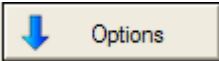
[BASS List 2007.5](#)
[HTM](#)
[PDF](#)
[XLS](#)
[SKIW](#)
[- End of Season 2006/7 list](#)
[Earlier BASS and FIS Points Lists](#)
[FIS Points List 2007.8 - valid to 30th June 2007](#)
[FIS Masters Points List 2007.2 - valid to 20th March 2007](#)
[BARTS Lists - latest 2006.6 - End of Season](#)
[2003 & earlier Lists](#)

Once it is downloaded and unzipped. You can import racers from this list.

Obviously, you do not want to import them all, but you can select them from within Excel.

Get back to this window:-

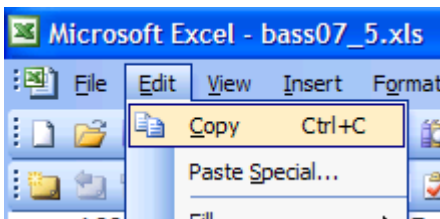


Using the  button.

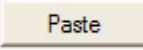
Then start Excel and using mouse drag or click option select the racers you want (who have entered).

	A	B	E	F	G	H	I	J	K	L	M	N	O	P	Q	R
1	REGNO	NAME		SEX	YOB	CLUBS		SL	GS		SG		DH			FISNO
2	12523	ADAMS, Katie		F	1991	DRA	SHK	156.15	F	191.96	F	359.43				225469
3	13051	ADCOCK, Rachel		F	1987	DRA	ARW	193.70	F	183.72	F					225344
4	8242	ALCOTT, Chimene		F	1982	DHO	SPR	22.06	F	5.60	F	15.55	F	5.81	F	225206
5	12570	ALLDRIDGE, Amanda		F	1991	SPR	SPR	231.12		194.49		282.96				225471
6	51543	AMERS, Vicky		F	1981	RAF				823.35				1099.32		
7	14159	ANDERSON, Beverley		F	1970	K	VTK									
8	30664	ANGUS, Kate		F	1994	GDN	SSC	237.54		245.59		384.44				
9	14713	ASKEW, Alexandra		F	1992	K	BGR	191.83		202.22		308.23				
10	14792	ATKINSON, Kirsty		F	1992	LIO	LIO	267.55		276.69						
11	14793	ATKINSON, Natalie		F	1990	LIO	LIO	305.09	F	503.95						225477
12	12428	BAGGIO, Javme		F	1991	SC	HEM	57.04	F	98.02	F	100.66	F			225461

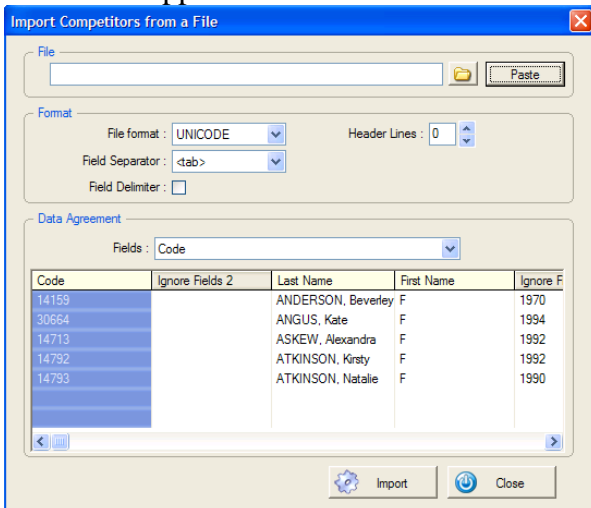
Then Copy using the Edit / Copy menu :-



Unfortunately you can only copy groups of records or one at a time, you cannot make selections with gaps in them.

Once you have copied then press the  button in Ski Pro.

This then happens:-



Hey we have been here before. Carry on picking and copying racers till you have all you want.